

KoldLok® Extended Raised Floor Grommet

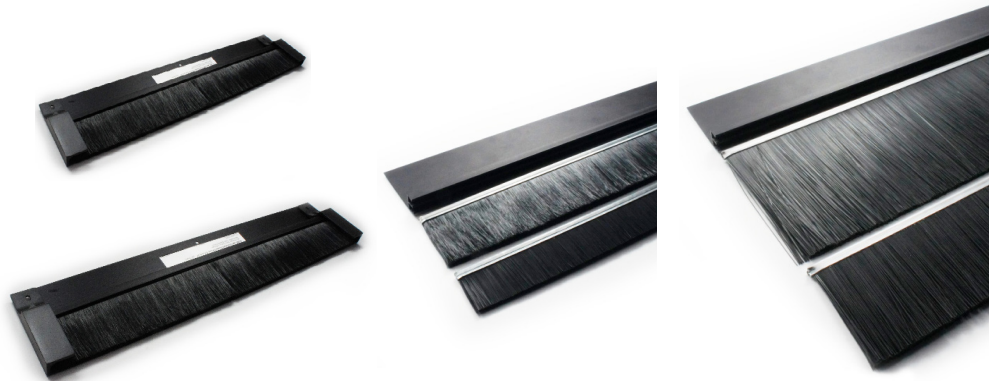
Part Number

3" x 24" - 10012

6" x 24" - 10013

3" x 60" - 10097

6" x 60" - 10098



Applications

Designed to seal small openings in new or existing raised floor cutouts used for communications or power cabling. Based on measurements at multiple data centers, on average 48% of valuable conditioned air is not reaching the air intake of IT equipment due to unsealed floor openings. This lost air, known as bypass airflow, contributes to IT equipment hot spots, cooling unit inefficiencies, and increasing infrastructure costs. KoldLok® products specifically address bypass airflow and its detrimental effects on data center cooling.

Features

- The Grommets can be modified to seal unique cable openings as needed.
- The Grommets contain no loose or partially fastened parts, which can become separated or fall through the raised floor.
- KoldLok products are compliant with Directive 2002/95/EC of the European Parliament and the Council on the Restriction of the Use of Certain Hazardous Substances in Electrical and Electronic Equipment (RoHS).

Benefits

- Supports increased cabinet density
- Increases existing cooling unit capacity
- Reduces the need to purchase additional cooling units
- Improves IT equipment reliability and extends equipment life
- Increases static pressure under the raised floor and improves cool air delivery through perforated tiles and floor grates
- Compliance with best practices for all raised floor cooling configuration (Hot and Cold Aisle, Hot Aisle containment, Cold Aisle containment, etc.)

Sealing Effectiveness

- Effective bypass airflow sealing in areas undisturbed by cable penetrations at static pressures up to 0.10 inches of water column
- Effective bypass airflow sealing with four ½ inch cables penetrating the Grommet at static pressure required to cool up to 3 kW/cabinet
- Effective bypass airflow sealing with four ½ inch cables penetrating the Grommet at a static pressure of 0.50 inches of water column

SPECIFICATIONS

Dimensions and Cutting Requirements	Inches (W x D)	Millimeters (W x D)
Part No. 10012 (3"x24") - Overall size	24" x 5.05"	610 x 128mm
Maximum cutout size sealed	24" x 4"	610 x 102mm
Usable cable area	22" x 2.5"	559 x 64mm
Product height above the raised floor	1" w/ mounting kit installed	25mm w/ mounting kit installed
Part No. 10013 (6"x24") - Overall size	24" x 8.08"	610 x 205mm
Maximum cutout size sealed	24" x 7"	610 x 178mm
Usable cable area	22" x 5.5"	559 x 140mm
Product height above the raised floor	1" w/ mounting kit installed	25mm w/ mounting kit installed
Part No. 10097 (3"x60") - Overall size	60" x 5.998"	610 x 152mm
Maximum cutout size sealed	60" x 4"	610 x 102mm
Usable cable area	60" x 2.5"	610 x 64mm
Product height above the raised floor	1" w/ adhesive tape installed	25mm w/ adhesive tape installed
Part No. 10098 (6"x60") - Overall size	60" x 9.025"	610 x 229mm
Maximum cutout size sealed	60" x 7"	610 x 178mm
Usable cable area	60" x 5.5"	610 x 140mm
Product height above the raised floor	1" w/ adhesive tape installed	25mm w/ adhesive tape installed

Patented Sealing System

U.S. Patent No. RE41863 and International Patents Pending for multi-layer, opposing and interwoven filaments.

Floor Mounting System

- Metal Extrusion filament holder: anodized aluminum alloy, black finish
- End Caps: PC/ABS, black (Provided with 24" versions only)

Grommet Frame

24" Grommets come standard with two (2) end caps, double-sided, non-particulating adhesive mounting kit and five (5) self-tapping screws per grommet.

60" Grommets DO NOT come standard with end caps, adhesive mounting kit or self-tapping screws.

Optional mounting tape or screws are available for custom installations. Minimum order may apply. Please call for details.

- Non-Particulating Double Sided Adhesive Tape - 36 Yard Roll: Part No. 20107
- Self-Tapping Screws - 600 Pieces: Part No. 20197

